

## UAS GEOZONE ENTRY REQUIREMENTS FOR EBR-63

### Agriculture

<b>GEOZONE MANAGEMENT (to apply for flight authorization)</b>	
Sint-Truiden AD Commander	<a href="mailto:ebst.geozonemanager@droneport.eu">ebst.geozonemanager@droneport.eu</a>
Sint-Truiden AD Commander	<b>+32 (0) 11 58 09 89 or +32(0) 494 702081</b>
Online information:	<a href="https://droneport.eu/onbemande-luchtvaart/vluchtgebieden/ebr-63/">https://droneport.eu/onbemande-luchtvaart/vluchtgebieden/ebr-63/</a>
Online Platform	<a href="https://skyman.lu/ebst/">https://skyman.lu/ebst/</a>

<b>Geozone part of EBR-63; Agriculture</b>			
Reference coordinate	1. 50°46'35"N 005°09'20"E	Zone height	<b>650ft AMSL or 400ft AGL</b>
	2. 50°46'32"N 005°09'57"E		
ARC	3. 50°46'21"N 005°10'26"E	UA Max height allowed	<b>300 ft AGL</b>
	4. 50°45'58"N 005°09'56"E		
	5. 50°46'17"N 005°08'55"E		
ARC	<b>ARC-a as defined by the Geozone Manual</b>	GRC	<b>VLOS/BVLOS over controlled ground area. Max. 4 as defined by the Geozone Manual</b>
Ground buffer	<b>50 m</b>	Air buffer	<b>100 ft</b>
Sensitive areas	<b>Road north and west of R63 Agricultural area.</b>		
Possible Time of Activity	<b>By NOTAM 24h in advance</b>		

<b>UAS REQUIREMENTS</b>	<b>Open</b>	<b>Specific</b>	<b>Certified</b>	<b>Class 1A/1B</b>
UAS Class	C0-C4	C5-C6	N/A	N/A
<b>OR</b>				
Mass	<25kg	Not applicable	According certification	<22kg
Return to home	X	X	According certification	X
Geofence set to remain within reserved zone Or system to prevent UA from leaving area	X	X	According certification	X
UA User Manual present	X	X	According certification	X
Remote ID	No	No	According certification	No

OPERATOR REQUIREMENTS					
	Class 1A/1B	Open	Specific		
		A1/A2/A3	STS	PDRA	SORA
Airspace	To be reserved through online platform	To be reserved through online platform	To be reserved through online platform	To be reserved through online platform	To be reserved through online platform
UA	Demonstrate compliance* by submitting relevant data in airspace reservation tool	Demonstrate compliance* by submitting relevant data in airspace reservation tool	Demonstrate compliance* by submitting relevant data in airspace reservation tool	Demonstrate compliance* by submitting relevant data in airspace reservation tool	Demonstrate compliance* by submitting relevant data in airspace reservation tool
Pilot	RPL-R/-A with min. A1/A3	A1/A3 or A2;	Compliance with STS	Compliance with PDRA demonstrated	Compliance with SORA demonstrated
OPERATIONAL AUTHORISATION	Class 1a permission or Class 1b receipt	Aware of operational limitations	DECLARATION ONLY (with receipt)	PDRA requires an operational authorisation from the Belgian Civil Aviation Authority	SORA requires an operational authorisation from the Belgian Civil Aviation Authority

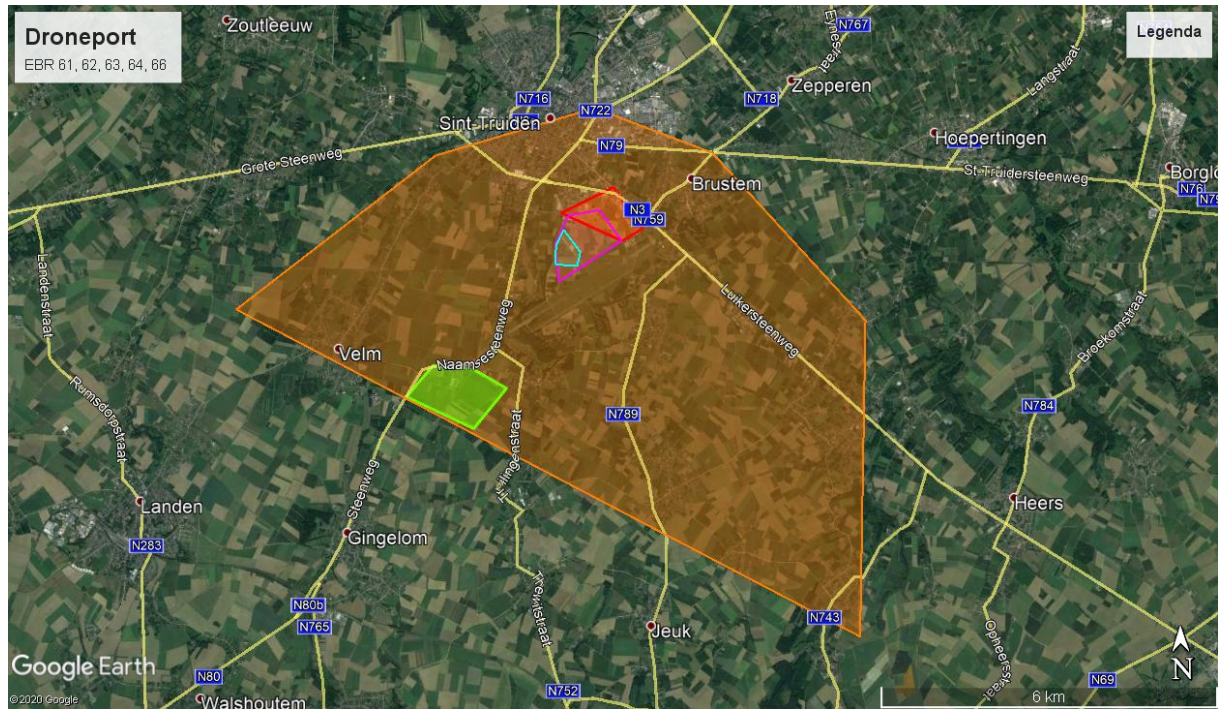
\*= UAS requirements

Operational Requirements for the operator			
		Max. fire state level	<b>G</b> <b>Y</b> <del><b>O</b></del> <del><b>R</b></del>
Take-Off Pos	<b>Within green area (see figure 2)</b>	Take-Off Direction	<b>Away from buildings and runway</b>
Landing	<b>Within green area (see figure 2)</b>	Landing direction	<b>Away from buildings and runway</b>
Hover	<b>N/A</b>	Two-Way Communication	<b>Telephone communication with EBST TWR</b>
Flight conditions	<b>VLOS</b>	Means of fire extinguishing	<b>For UAS fires and additional means for ground fires.</b>
Mandatory Safety equipment provided by operator	<b>First-aid kit - Fire Extinguisher High visibility jacket worn by crew</b>		

Important Telephone Numbers			
Sint-Truiden TWR	<b>+32(0)11 58 09 89</b>	Fire	<b>112 or +32 (0) 67 41 18 30</b>
Sint-Truiden TWR	<b>+32 (0) 473 97 61 99</b>	Police	<b>101 or +32 (0) 67 88 92 11</b>

Emergency Procedures	
Loss of communication (TWR)	<b>Land immediately and contact EBST TWR</b>
Loss of navigation	<b>Initiate Return-to-Home and contact EBST TWR</b>
Fly away	<b>Monitor direction, height and speed. Contact EBST TWR</b>
Fire	<b>Contact EBST TWR to inform Fire Department</b>
Public Encroachment	<b>Observer to secure area. Land if necessary.</b>
Aircraft intruder	<b>Decreasing maximum height to below obstacle height 45m AGL.</b>

### All EBRs



### EBR 63

