

## UAS GEOZONE ENTRY REQUIREMENTS FOR EBR-64

<b>GEOZONE MANAGEMENT (to apply for flight authorization)</b>	
Sint-Truiden AD Commander	<a href="mailto:ebst.geozonemanager@droneport.eu">ebst.geozonemanager@droneport.eu</a>
Sint-Truiden AD Commander	<b>+32 (0) 11 58 09 89 or +32(0) 494 702081</b>
Online information:	<a href="https://droneport.eu/onbemande-luchtvaart/vluchtgebieden/ebr-64/">https://droneport.eu/onbemande-luchtvaart/vluchtgebieden/ebr-64/</a>
Online Platform	<a href="https://skyman.lu/ebst/">https://skyman.lu/ebst/</a>

<b>Geozone part of EBR-64; BVLOS operation</b>			
Reference coordinates	<ol style="list-style-type: none"> <li>1. 50°48'36"N 005°09'25"E</li> <li>2. 50°49'02"N 005°11'51"E</li> <li>3. 50°48'35"N 005°13'38"E</li> <li>4. 50°46'57"N 005°15'55"E</li> <li>5. 50°43'55"N 005°15'45"E</li> <li>6. 50°47'09"N 005°06'20"E</li> </ol>	Zone height	<b>2000ft AMSL or 1750ft AGL</b>
		UA Max height allowed	<b>1900ft AMSL 1650 ft AGL</b>
ARC	<b>ARC-a as defined by the Geozone Manual</b>	GRC	<b>Within AD-perimeter: max. 4 Outside AD-perimeter: depending on operator</b>
Ground buffer	<b>50 m</b>	Air buffer	<b>100 ft</b>
Sensitive areas	<b>Highways Villages Religious buildings Cemetaries</b>	Prohibited areas	<b>Populated areas<sup>1</sup></b>
Dangerous areas	<b>Chemical factories (yellow mark)</b>		
Possible Time of Activity	<b>By NOTAM 24h in advance</b>		

<b>UAS REQUIREMENTS</b>	<b>Open</b>	<b>Specific</b>	<b>Certified</b>	<b>Class 1A/1B</b>
UAS Class	C0-C4	C5-C6	N/A	N/A
<b>OR</b>				
Mass	<25kg	Not applicable	According certification	<22kg
Return to home Or system to prevent UA from leaving area	X	X	According certification	X
Geofence set to remain within reserved zone Or system to prevent UA from leaving area	X	X	According certification	X
UA User Manual present	X	X	According certification	X
Remote ID	N/A within AD perimeter Outside AD perimeter GZ decision	N/A within AD perimeter Outside AD perimeter GZ decision	According certification	N/A within AD perimeter Outside AD perimeter GZ decision

<sup>1</sup> (unless operational authorisation obtained)

OPERATOR REQUIREMENTS					
	Class 1A/1B	Open	Specific		
		A1/A2/A3	STS	PDRA	SORA
Airspace	To be reserved through online platform	To be reserved through online platform	To be reserved through online platform	To be reserved through online platform	To be reserved through online platform
UA	Demonstrate compliance* by submitting relevant data in airspace reservation tool	Demonstrate compliance* by submitting relevant data in airspace reservation tool	Demonstrate compliance* by submitting relevant data in airspace reservation tool	Demonstrate compliance* by submitting relevant data in airspace reservation tool	Demonstrate compliance* by submitting relevant data in airspace reservation tool
Pilot	RPL-R/-A with min. A1/A3	A1/A3 or A2;	Compliance with STS	Compliance with PDRA demonstrated	Compliance with SORA demonstrated
OPERATIONAL AUTHORISATION	Class 1a permission or Class 1b receipt	Aware of operational limitations	DECLARATION ONLY (with receipt)	PDRA requires an operational authorisation from the Belgian Civil Aviation Authority	SORA requires an operational authorisation from the Belgian Civil Aviation Authority

\*= UAS Requirements

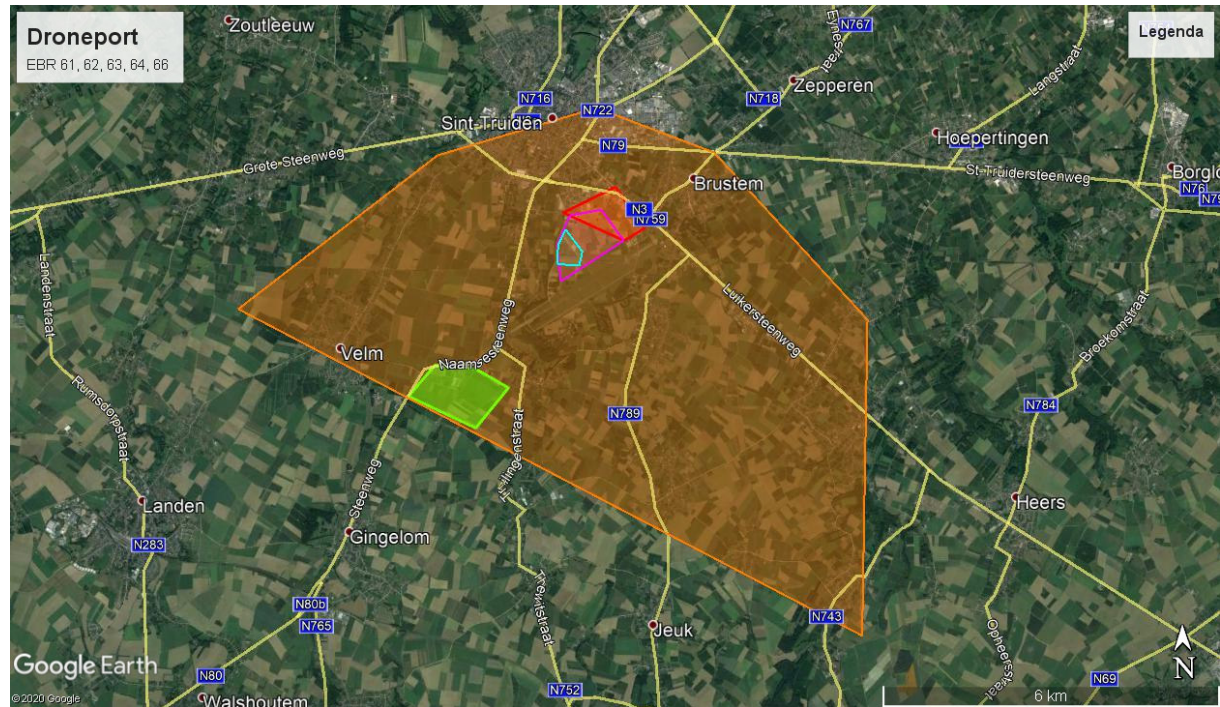
Operational Requirements for the operator			
Weather minima:	<b>Min. visibility 5 km min. cloudbase 1500ft</b>	Max. fire state level	<b>G Y <del>Ø</del> <del>R</del></b>
Take-Off Pos	<b>within EBR64</b>	Take-Off Direction	<b>Away from buildings and runway</b>
Landing	<b>within EBR64</b>	Landing direction	<b>Away from buildings and runway</b>
Hover	<b>N/A</b>	Two-Way Communication	<b>Required Private Mobile Radio with EBST TWR or Brustem Radio (AIP EBST AD 2.18) or telephone EBST TWR</b>
Flight conditions	<b>VLOS: OPEN &amp; SPEC CAT BVLOS: SPEC CAT</b>	Means of fire extinguishing	<b>For UAS fires and additional means for ground fires.</b>
Mandatory Safety equipment provided by operator	<b>First-aid kit - Fire Extinguisher High visibility jacket worn by crew</b>		

Important Telephone Numbers			
Sint-Truiden TWR	<b>+32(0)11 58 09 89</b>	Fire	<b>112 or +32 (0) 67 41 18 30</b>
Sint-Truiden TWR	<b>+32 (0) 473 97 61 99</b>	Police	<b>101 or +32 (0) 67 88 92 11</b>

Emergency Procedures	
Loss of communication (TWR)	<b>Land immediately and contact EBST TWR</b>
Loss of navigation	<b>Initiate Return-to-Home and contact EBST TWR</b>
Fly away	<b>Monitor direction, height and speed. Contact EBST TWR</b>

Fire	Contact EBST TWR to inform Fire Department
Public Encroachment	Observer to secure area. Land if necessary.
Aircraft intruder	Decreasing maximum height to minimum safe height in accordance with risk analysis.

All EBRs



EBR 64

