

UAS GEOZONE ENTRY REQUIREMENTS FOR EBR-64

GEOZONE MANAGEMENT (to apply for flight authorization)	
Sint-Truiden AD Commander	ebst.geozonemanager@droneport.eu
Sint-Truiden AD Commander	+32 (0) 11 58 09 89 or +32(0) 494 702081
Online information:	https://droneport.eu/onbemande-luchtvaart/vluchtgebieden/eb-64/
Online Platform	https://skyman.lu/ebst/

Geozone part of EBR-64; BVLOS operation			
Reference coordinates	1. 50°48'36"N 005°09'25"E 2. 50°49'02"N 005°11'51"E 3. 50°48'35"N 005°13'38"E 4. 50°46'57"N 005°15'55"E 5. 50°43'55"N 005°15'45"E 6. 50°47'09"N 005°06'20"E	Zone height	2000ft AMSL or 1750ft AGL
		UA Max height allowed	1900ft AMSL 1650 ft AGL
ARC	ARC-a as defined by the Geozone Manual	GRC	Within AD-perimeter: max. 4 Outside AD-perimeter: depending on operator
Ground buffer	50 m	Air buffer	100 ft
Sensitive areas	Highways Villages Religious buildings Cemetaries	Prohibited areas	Populated areas¹
Dangerous areas	Chemical factories (yellow mark)		
Possible Time of Activity	By NOTAM 24h in advance		

UAS REQUIREMENTS	Open	Specific	Certified
UAS Class	C0-C4	C5-C6	N/A
OR			
Mass	<150kg	Not applicable	According certification
Return to home Or system to prevent UA from leaving area	X	X	According certification
Geofence set to remain within reserved zone Or system to prevent UA from leaving area	X	X	According certification
UA User Manual present	X	X	According certification
Remote ID	N/A within AD perimeter Outside AD perimeter GZ decision	N/A within AD perimeter Outside AD perimeter GZ decision	According certification

¹ (unless operational authorisation obtained)

OPERATOR REQUIREMENTS				
	Open	Specific		
	A1/A2/A3	STS	PDRA	SORA
Airspace	To be reserved through online platform	To be reserved through online platform	To be reserved through online platform	To be reserved through online platform
UA	Demonstrate compliance* by submitting relevant data in airspace reservation tool	Demonstrate compliance* by submitting relevant data in airspace reservation tool	Demonstrate compliance* by submitting relevant data in airspace reservation tool	Demonstrate compliance* by submitting relevant data in airspace reservation tool
Pilot	A1/A3 or A2;	Compliance with STS	Compliance with PDRA demonstrated	Compliance with SORA demonstrated
OPERATIONAL AUTHORISATION	Aware of operational limitations	DECLARATION ONLY (with receipt)	PDRA requires an operational authorisation from the Belgian Civil Aviation Authority	SORA requires an operational authorisation from the Belgian Civil Aviation Authority

*= UAS Requirements

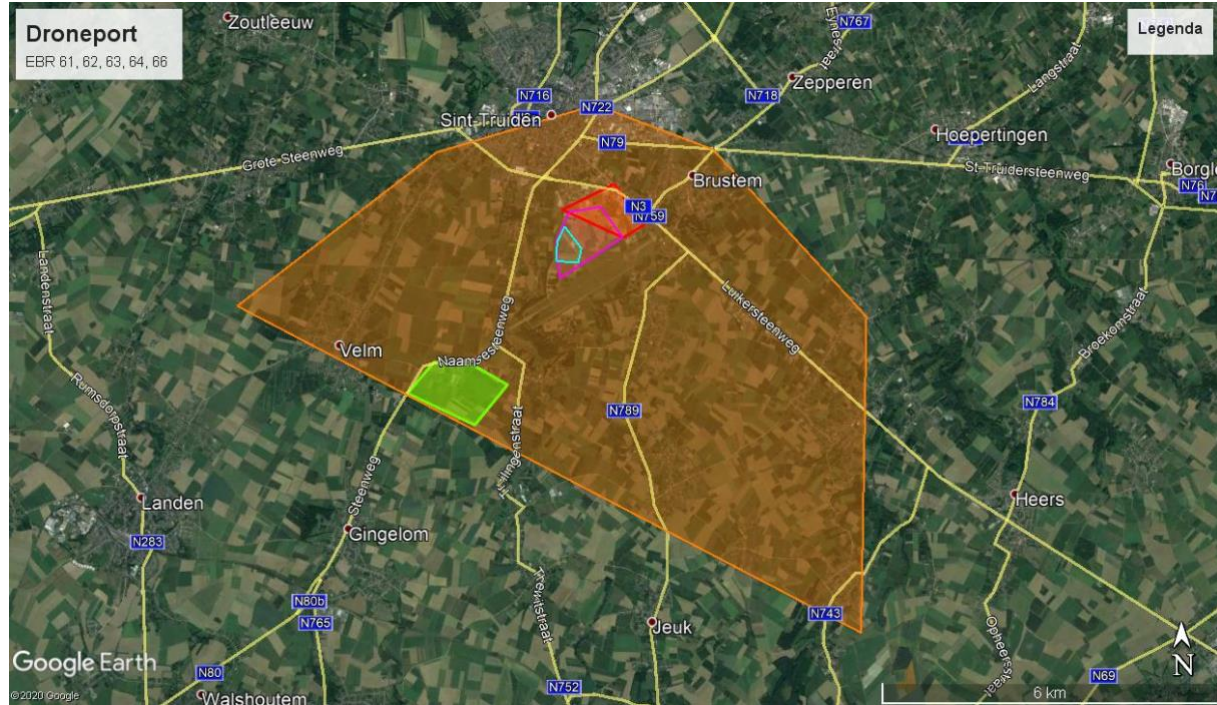
Operational Requirements for the operator				
Weather minima:	Min. visibility 5 km min. cloudbase 1500ft	Max. fire state level	G	Y
Take-Off Pos	within EBR64	Take-Off Direction	Away from buildings and runway	Away from buildings and runway
Landing	within EBR64	Landing direction	Away from buildings and runway	Away from buildings and runway
Hover	N/A	Two-Way Communication	Required Private Mobile Radio with EBST TWR or Brustem Radio (AIP EBST AD 2.18) or telephone EBST TWR	Required Private Mobile Radio with EBST TWR or Brustem Radio (AIP EBST AD 2.18) or telephone EBST TWR
Flight conditions	VLOS: OPEN & SPEC CAT BVLOS: SPEC CAT	Means of fire extinguishing	For UAS fires and additional means for ground fires.	For UAS fires and additional means for ground fires.
Mandatory Safety equipment provided by operator	First-aid kit - Fire Extinguisher High visibility jacket worn by crew			

Important Telephone Numbers			
Sint-Truiden TWR	+32(0)11 58 09 89	Fire	112 or +32 (0) 67 41 18 30
Sint-Truiden TWR	+32 (0) 473 97 61 99	Police	101 or +32 (0) 67 88 92 11

Emergency Procedures	
Loss of communication (TWR)	Land immediately and contact EBST TWR
Loss of navigation	Initiate Return-to-Home and contact EBST TWR
Fly away	Monitor direction, height and speed. Contact EBST TWR
Fire	Contact EBST TWR to inform Fire Department

Public Encroachment	Observer to secure area. Land if necessary.
Aircraft intruder	Decreasing maximum height to minimum safe height in accordance with risk analysis.

All EBRs



EBR 64

