

# WELCOME AT DRONEPORT

Thank you for participating in this world record attempt!  
Here are some house rules and safety guidelines:



**15KM/H  
SPEED LIMIT**



**STAY IN LINE,  
NO OVERTAKING**



**DRONES ARE STRICTLY  
PROHIBITED**



**NO SMOKING, EXEPT  
IN THE DESIGNATED  
SMOKING AREA**



**DON'T DRINK  
AND DRIVE**



**NO LITTERING  
OR DAMAGING**



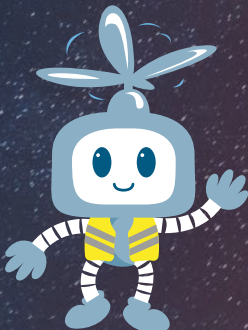
**WALK IN THE  
DESIGNATED AREAS**



**WE RECCOMENDED  
WEARING LIGHTS**



**BEWARE OF  
PEDESTRIANS WHILE  
EXITING THE RUNWAY**



Safety is our highest priority!  
Any violation of the house rules above will result  
in immediate exclusion from the event.

**ENJOY THIS ONE-OF-A-KIND  
SPECTACLE!**

- 1. PARK YOUR CAR**  
Marshalls will guide you to a designated parking spot in the lineup. Please follow their instructions closely to ensure a smooth and organized parking process.
- 2. WALK TO THE DRIVERS VILLAGE**  
Once your vehicle has been parked, proceed to the drivers village by walking along the side of the runway. Avoid walking between cars to prevent accidents. Food trucks and family entertainment will be available. Instead of bringing your own food or drinks, please consider purchasing refreshments on-site. This helps us to cover the costs of this free event.
- 3. START RETURNING TO YOUR CAR (18H00)**  
The show can be programmed up to 10 minutes in advance. When signaled by the event organizer, **one person per car** must return to their vehicle with full access to the vehicle (keycard or app) to configure the car.
- 4. START SCHEDULING THE SHOW (18H30)**  
A USB stick will be placed behind your windshield wiper by our marshalls. Retrieve the USB stick, insert it into your car's data port (USB-A port, typically located in the glove box), and schedule the show named '**BELGIUM**' to begin at **18h40**. Stay next to your vehicle until a marshall has verbally confirmed that your car has been correctly configured. If you encounter any issues, turn on your hazard lights to request assistance. Please make sure **all the doors and windows are completely closed**, otherwise the show will not start! Look at the back of this flyer for more detailed instructions and a QR-code to watch an instruction video.

- 5. RETURN TO THE DRIVERS VILLAGE**  
For safety reasons, the runway needs to be cleared before the main show starts and all participants must be in the drivers village during the show. So once your car has been successfully configured, return to the drivers village as soon as possible. We have built in a 20-minute 'prelude' (silent show) to help you get back to the drivers village in time. This means **you have a maximum of 10 minutes to configure the show, and another 20 minutes to make your way back** to the drivers village. If you arrived later than most cars, be aware that the walking distance to the drivers village may be significant (op to 900m), so plan accordingly.
- 6. ENJOY THE LIGHT SHOW (19H00)**  
Experience a breathtaking, perfectly synchronized light and drone show celebrating sustainable mobility, autonomous technology, and clean transportation. The main show will last about 10 minutes. Right after the show, hold your horses as we have prepared a little extra surprise...
- 7. START OF THE EXIT PROCEDURE (20H00)**  
After the show, you will have some time to finish your drink or food, and walk back to your car. To prevent accidents while maneuvering between parked and moving vehicles, we will start the exit procedure at 20H00, provided we can maintain the planned schedule. So be back at your car at 20H00 the latest, ready to drive off at the direction of a marshall.

Important notice: Any cars not off the runway by 23H00 will be towed to prepare the airstrip for the next day's aviation activities. Towing costs will be charged to the vehicle owner.

**18H30 = START SCHEDULING THE SHOW**

**18H40** = THE STARTING TIME OF THE SHOW YOU HAVE TO SELECT IN YOUR CAR\*

**19H00 = ACTUAL START OF SHOW**

\*If the timing changes, we will announce it in the WhatsApp group

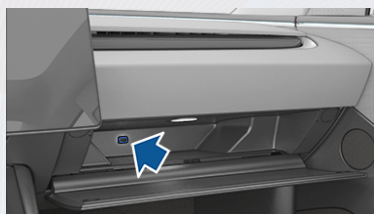
**ADD YOURSELF TO THE PARTICIPANT WHATSAPP GROUP FOR REAL TIME UPDATES!**

Please scan the QR code to join, as we'll be sharing potential changes of the timing of the light show there, as well as and other important instructions.




# SCHEDULING THE LIGHT SHOW

## A STEP-BY-STEP GUIDE



When you get back to your car, A USB-stick will be placed behind your windshield wiper by our marshalls. Retrieve the USB stick and locate your car's data port (USB-A port), typically located in the glove box. Pull out the Sentry memory stick and replace it with the provided USB-stick.

After the USB stick is plugged in:

- Go to your 'Toybox' 🎮
- Navigate to the 'Light Show' section and press the 'Schedule Show' button 
- The light show named 'BELGIUM' should come up, if not, select it in the dropdown 'Light Show'.
- As from 18h30 you will be able to schedule the show to start at 18h40, as you can only schedule a show 10 minutes upfront.
- **Select 18h40** as the 'Scheduled Time' and press 'Confirm'.
- 'Dance moves' can either be on or off, this will not matter as dance moves are not included in the show we programmed.

When set, get out of your Tesla and make sure **all windows and doors are closed**. **DO NOT** lock your Tesla, open any windows, doors, trunk or frunk after setting the show, as this will cancel the show!

Stand by your vehicle until one of our marshalls has verbally confirmed that your car has been correctly scheduled. Usually in less than a couple of minutes. After this confirmation, make your way **back to the drivers village** as soon as possible.



**If you encounter any issues, turn on your hazard lights to request assistance. A marshall will get to you ASAP.**

*Instruction video*

